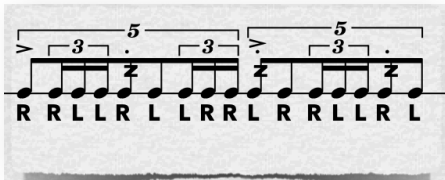


# RUDIMENTAL RECIPE

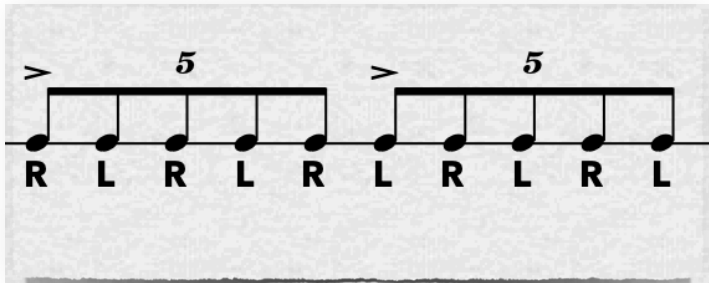
6 steps

bar 15 of "Peeb" by David Parker



# **STEP 1**

Start with a stock 5-let check.



>

5

>

5

R

L

R

L

R

L

R

L

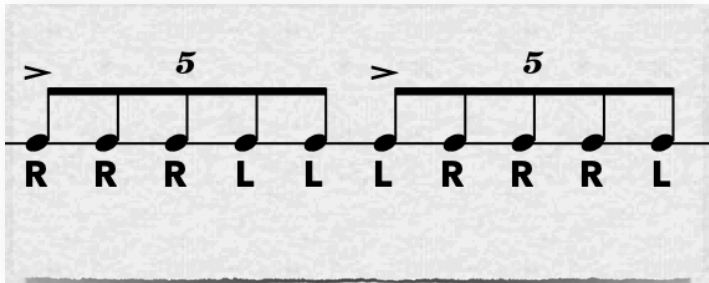
R

L

# **STEP 2**

Add different sticking.

This focuses on the grace notes of the bar and the challenging skill sets that they create.



>

5

>

5

R

R

R

L

L

L

R

R

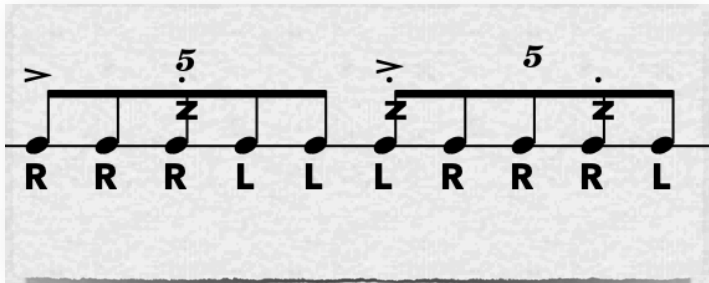
R

L

# STEP 3

Add the buzzes.

The key here is being **quick and light** while still articulating the correct rhythm & dynamics.



R

R

R

L

L

L

R

R

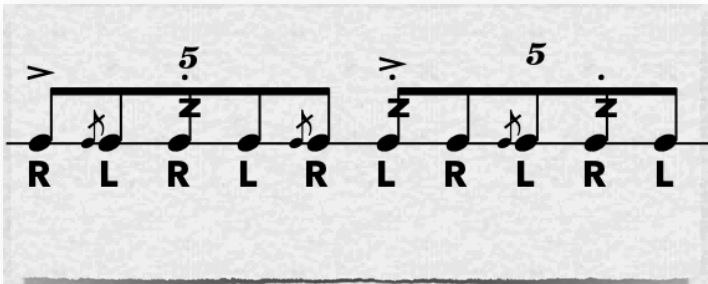
R

L

# **STEP 4**

Add the primary notes of the flams.





# **STEP 5**

Double the primary notes of the flams, creating low "cheeses."

A musical notation for a guitar exercise on a single staff. The notation consists of two measures, each containing a sequence of notes connected by a thick horizontal line. The notes are quarter notes. The first measure has notes on frets 1, 2, 3, 4, 5, 4, 3, 2, 1. The second measure has notes on frets 1, 2, 3, 4, 5, 4, 3, 2, 1. Above the first measure, there is an accent (>) over the first note and a '5' with a dot above it over the fifth note. Above the second measure, there is an accent (>) over the first note and a '5' with a dot above it over the fifth note. Below the staff, the letters R and L indicate the hand for each note: R L L R L R R L R L L R L.

**R L L R L R R L R L L R L**

# STEP 6

Finish the excerpt by "slurring" the cheeses.

The sticking stays the same from the Step 5! Simply play the doubles slightly later after the grace notes, creating an even 3 notes where each cheese was.

The image shows a musical exercise on a single staff. It consists of two measures of music. The first measure contains a sequence of notes: a quarter note, a triplet of eighth notes, a dotted quarter note, another triplet of eighth notes, and a quarter note. The second measure contains: a quarter note, a triplet of eighth notes, a dotted quarter note, another triplet of eighth notes, and a quarter note. Above the staff, a bracket labeled '5' spans the first five notes of the first measure. Another bracket labeled '5' spans the first five notes of the second measure. Above the first triplet in each measure is a bracket labeled '3'. Above the second triplet in each measure is a bracket labeled '3'. Above the dotted quarter note in each measure is a bracket labeled '3'. Below the staff, a thick black bar indicates the fretboard. Underneath this bar, the letters 'R', 'L', 'R', 'L', 'R', 'L' are placed under the first six notes of the first measure, and 'R', 'L', 'R', 'L', 'R', 'L' are placed under the first six notes of the second measure. The letters 'R' and 'L' are in bold. The notes are quarter notes, eighth notes, and dotted quarter notes.

**R R L L R L L R R L R R L L R L**